

uilding

innovations

A MAGAZINE FOR ARCHITECTS



DECEMBER 2017 EDITION

www.buildingininnovations.co.uk



PROTECTION FOR WALLS, DOORS *and your budget*



YEOMAN
SHIELD
WALL & DOOR PROTECTION

Yeoman Shield products put
an end to costly re-painting and repair.

for more information
call **0113 279 5854** or email sallyann@yeomanshield.com

www.yeomanshield.com





Just some of this month's highlights...

- 4.. Armstrong CPD Explains The Advantages Of Metal Ceilings
- 7... CNew Fire Retardant Membrane Developed For Cladding
- 10... Experience A Purple Patch With Vicaima
- 12... Aluprof On The Square
- 22... Coloured Rads As We Head Into 2018!
- 32... Twisted Fins Impress At The Oracle
- 33... The Silence Of International Design

Front Cover...Photo kindly supplied by Stuctura UK
www.structura-uk.com

Some of the colour photography used in Building Innovations is provided and paid for by contributors. The publishers do not accept liability for errors that may appear in the publication. In association with Jasper, Muz and the Suede Grenade. All rights reserved. No part of this publication may be reproduced or transmitted in any form or by any means, electronic or mechanical, without the consent of the publisher.

Published by: L2 Media Limited

Editorial Office: Kingfisher's Retreat, Dunston Business Village, Stafford Road, Dunston, Stafford ST18 9AB

Tel: 01785 711591 Fax: 0845 862 8639

info@l2media.uk www.l2media.uk

www.twitter.com/Link2Media www.facebook.com/L2MediaLtd

uk.pinterest.com/L2Media issuu.com/link2media

Reader Enquiry E-Service -

If you would like to receive further information about any of the products and services featured in this issue, just email us at info@l2media.uk, type '**BI DEC 2017**' in the email title, include the page number and title of the article of interest and your contact details. We'll do the rest! (If you'd prefer to fax the information, it's 0845 862 8639, or you can even post it to us!)

Ten Million Reasons To Celebrate At AG's FMT Site

Staff at AG's (Acheson + Glover's) Fivemiletown site are celebrating a remarkable milestone in the company's production history. The workforce has manufactured its ten millionth block Anchor retaining wall block, renowned for its high quality and durability.

Each block weighs anything between 6kg and 40kg. It takes mere seconds to make

one and those made so far have been used in projects around the UK and Ireland including the M1 Belfast, M32 bus lane extension Bristol and BMW manufacturing plant in Cowley, Oxfordshire.

To put it into perspective, ten million blocks would stretch from Belfast to Turkey or from the top to the bottom of Mount Everest 516 times over.

Stephen Acheson, Commercial Director, said: "Our Retaining Wall has been manufactured at FMT since 1999. One of our most popular products, it's not surprising we have reached ten million but getting there wouldn't have been possible without the hard work and dedication of the Fivemiletown team." www.ag.uk.com



Select The Best With Sika Pro Select

The sealants and adhesive range from Everbuild – A Sika Company is growing with the launch of Sika PRO Select, a fantastic new range bringing the renowned Sika technical expertise to the trade user. This extensive new range consists of ten products including Sika MaxTack Super

Charged, an extremely fast setting adhesive with a fixing time of just 20 minutes and the ability to bond to a variety of surfaces, both indoors and outdoors and even underwater.

The PRO Select range also includes Sika MaxTack Ultra Clear, a 100%

transparent, high strength sealant and adhesive, Sika MaxTack Ultimate, an extra strong hybrid sealant and adhesive for use on almost every application imaginable, SikaSeal Multi Purpose Silicone and Sika MaxTack Instant Grab SF. www.everbuild.co.uk



Armstrong CPD Explains The Advantages Of Metal Ceilings

A RIBA-approved CPD which details the benefits of specifying metal systems is now available from Armstrong Ceiling Solutions. The presentation, which gives architects a one-hour CPD credit, recognises the degree to which metal systems now play a vital role in Armstrong's already peerless portfolio.

The reasons given for specifying metal ceiling and wall systems are numerous and varied, from their aesthetics (a crisp, clean, hi-tech visual in flat, curved or sculptured forms, and linear or modular layouts) to their durability, withstanding rigorous handling, with edges that do not chip and surfaces that do not flake. They are also easily cleaned without surface damage and humidity resistant up to 90%, even to the extent they can be used externally if back-coated. A variety of coatings also make them dirt resistant (TrioGuard™) and anti-microbial (BioGuard). Armstrong's engineered metal portfolio is now so comprehensive that there is a tile to suit any building module, with a variety of perforation and colour options to give limitless configurability. The various perforations, coupled with various infill materials, unite to meet sound absorption and sound attenuation requirements. They can also easily accommodate services such as lights, grills, sensors and sprinklers. The CPD also takes architects through the manufacturing process for tiles, planks, canopies and bespoke (curved, radial and trapezoidal) systems.

More information is accessible via the Armstrong Ceilings website www.armstrongceilings.com/commercial/en-gb/ or the manufacturer's app which is available from both the Apple store as well as the Google Play store, or by clicking on one of the links below with your mobile device www.armstrong.com/CeilingDownloads-Apple or www.armstrong.com/CeilingDownloads-Android.



McAvoy Wins Major Industry Award For BIM

The McAvoy Group has won a major industry award for its commitment to adopting and implementing Building Information Modelling (BIM) in its offsite construction projects.

McAvoy was presented with the award for Best Virtual Reality BIM at the third annual RICS BIM4SME Awards. This is for the design and delivery of a two-storey primary school building for children with special educational needs at West Hill School for Surrey County Council.

Ten firms that utilise BIM technology to create smarter and more creative buildings were recognised at this major industry event, held at the iconic HMS Belfast in London.

The RICS has identified BIM as the critical development affecting organisations of every size across the construction industry, and it continues to promote the importance of BIM adoption and those companies at the forefront in the UK. The BIM4SME awards showcase excellence, promote best practice, and the tremendous opportunities that BIM presents for the whole of construction.

Commenting on the awards, Alan Muse, Global Director of Built Environment Standards at the RICS, said, "BIM offers significant benefits for construction projects...it enables a project to be delivered faster, of higher quality, have more sustainable performance and more efficient operation. More firms are adopting BIM for these reasons and our winners are testament to those leading the way in utilising it to deliver better, more innovative and cost-effective built initiatives. I hope they inspire other businesses of the importance and benefits of BIM in revolutionising the construction process."

Eugene Lynch, Managing Director of The McAvoy Group, said, "We are absolutely thrilled that our industry-leading commitment and investment in BIM has been recognised in this way. McAvoy was the first offsite construction specialist to be accredited to BIM Level 2 – which was a major achievement. We are now working towards BIM Level 3 as we really value the efficiency benefits that the process and the latest virtual reality technology can bring to our customers and our offsite projects."

David Clark, Innovation Manager at The McAvoy Group added, "There is a strong synergy between BIM and offsite construction. Our offsite solutions and factory production processes significantly reduce time on site, and improve the quality and efficiency of buildings. The use of BIM takes that to a new level."

"We consider BIM and virtual reality to be an absolutely vital part of our business. Harnessing the latest technology allows us to streamline processes even further, to help facilitate better decision making and enhance stakeholder engagement at the earliest possible stages of a project. This will deliver shorter design periods and in our view, outstanding buildings that exceed our clients' expectations."

For further information, visit www.mcavoygroup.com





Wells MP Visits Offsite Solutions Bathroom Pod Factory In Somerset

MP James Heapey recently paid a visit to the Offsite Solutions factory in Highbridge, Somerset, which makes bathroom pods for the construction industry. On his tour, the Wells MP viewed cutting edge offsite technology and the company's expanded production facilities where complete bathrooms are manufactured for apartments, student accommodation, healthcare, hotel and care home schemes – faster and to consistently higher quality standards than is achievable on a building site.

During his visit he saw production lines for both steel-framed and composite GRP bathroom pods, the company's latest product innovations, and the quality of factory-built bathrooms at first hand. Following his tour, James Heapey MP commented, "It is fantastic to see such a fast-growing business flourishing, which is great news for the region and is creating manufacturing jobs in the heart of Somerset. I am very impressed with the investment Offsite Solutions has made and its plans to increase capacity further. The business has worked hard to create an excellent manufacturing facility to meet the growing market for offsite construction and bathroom pods."

Richard Tonkinson, Executive Director of Offsite Solutions, said, "We were delighted to host a visit from our MP. We are at an important phase in the development of the business. We announced a record £30m of orders for the first six months of this year and are mid-way through an ambitious expansion programme to increase manufacturing capacity to meet customer demand. When we acquired the business in 2004, turnover was in the region of £2m. It now stands at around £25m and we are one of the largest employers in Highbridge."

"We have significant prospects for further growth and an order pipeline which already runs into 2019, testament to the sustained hard work, enthusiasm and talent of our employees who have helped to develop our products and services, to take the business to where it is today."

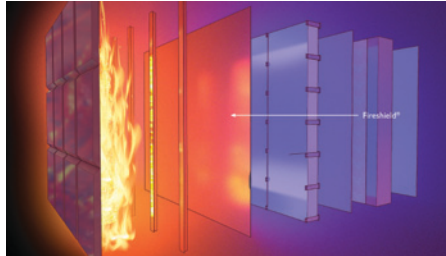
Offsite Solutions has announced a £5m investment programme to expand its production facilities in Highbridge to meet the growing demand for its factory-built bathrooms. This is the biggest expansion programme in the history of the company.

The first two phases of the expansion have now been completed – a new 45,000sqft factory that has doubled capacity for steel-framed bathroom pods, and a £1m facility to increase storage space to accommodate up to 3,500 pods. A £3m investment is planned to bring all the company's production operations together in Highbridge in a new, purpose-designed, state-of-the-art factory. This will increase capacity to over 150,000sqft, allowing the manufacture of up to 12,500 of its award-winning factory-built bathrooms each year.

Offsite Solutions offers a comprehensive and expanding range of bathroom pods to suit different building types and applications. Options include steel-framed pods with traditional tiled finishes for high-end apartments, student residences and hotels; robust and low maintenance GRP composite pods for student accommodation, care homes, social housing and healthcare; hybrid pods for specialist projects, and demountable GRP pods for ease of installation in refurbishment schemes. www.offsitesolutions.com

New Fire Retardant Membrane Developed For Cladding

The A. Proctor Group, renowned for providing high quality membrane solutions for controlling the heat, air, moisture movement in buildings (HAMM), is leading the way with the development of Fireshield®, a new vapour permeable membrane, which is designed specifically to improve the fire protection behind cladding. Fireshield is the culmination of leading research to produce a vapour permeable membrane with a fire proof surface, which has a unique composition that actively reacts to prevent fire taking hold. The unique coating of Fireshield actively extinguishes fire rather than just resisting it, and significantly reduces the formation of droplets and smoke. Fireshield is classified as Class B, s1 -d0 according to the Euroclass system, which classifies the reaction to fire performance of building products. The performance of Fireshield is in advance of the requirements of the current classification grading. www.proctorgroup.com



Reynaers Celebrates Double Win At Prestigious CMA Awards

Action-packed driving days and gourmet dining events from Reynaers, together with an insightful white paper campaign highlighting the changing way buildings are designed, have resulted in a double win at the industry's Construction Marketing Awards 2017. The first award was for Best Use of Events and Live Marketing, earned for R-Cuisine, a series of exclusive invitation-only events that build relationships between Reynaers and Architects. The second award was for The View – Design Transformed, a white paper that was researched, written and designed by the team at Reynaers' UK design, PR and social media agency Mobas. www.reynaers.co.uk



SGB Announces Major New Scaffolding Contract With Leading Property Developer



A leading scaffolding and access system provider has revealed details of a significant new deal it has won from a major UK property developer. The four-year deal sees SGB appointed as the sole scaffolding provider to Countryside's North West division, and carries a contract value in excess of £13 million. SGB - which is part of the Brand Energy & Infrastructure Services group - will now provide scaffolding services to Countryside. The negotiations were led by SGB's Business Development Manager, Jason Milner. "We are extremely proud and excited to be partnering Countryside on these schemes," he comments. "We currently have 23 live sites in progress with more set to follow, and this will make a great contribution to our planned growth strategy over the next 4 years." www.sgb.co.uk

Aluprof Expand London Office

As the demand for Aluprof systems and solutions continues to grow the company has recently appointed Przemyslaw Federowski as Façade Engineer in their London office. A trained engineer, Przemyslaw brings with him a wealth of experience gained in the UK facade and solar shading industry. Working closely with Aluprof's team of Project Consultants, the support position of the Façade Engineer will assist specifiers in detaining Aluprof systems into any project particularly where challenging details are required. As Aluprof embraces 'Value Management' across the project timeline, the Façade Engineers role will seek and design bespoke solutions which can offer project both cost and time savings whilst benefiting from robust design solutions. Aluprof's extensive range of systems extend to unitised curtain walling, sliding folding doors, commercial doors systems and a wide range of window systems, all of which are increasingly being specified on a variety of residential and commercial projects across the UK and overseas. www.aluprof.co.uk



New Polymer Plumbing Pipe Course Added To Rehau's CPD Programme



REHAU is inviting professionals from the building service industry to register for a CPD from the refreshed 2017/2018 REHAU CPD programme. Many of REHAU's professional courses are accredited by CIBSE, including the latest addition to the 2017/18 programme; Polymer Pipe for Heating and Plumbing. This new seminar covers how polymer pipes can be used in different installations, using the example of REHAU's new RAUTITAN pipe, and the learning programme is fully approved by CIBSE. Alongside the new polymer pipe CPD, REHAU's packed CPD offering for 2017/18 includes seminars on District Heating and Heat Networks, an Introduction to Renewable Heat, Ground Source Heating, Ground-air Heat Exchangers, an Introduction to Subsurface Heating and Cooling, Thermally Activated Building Structures, Chilled Ceiling systems, Innovative uses of Cable Trunking, and Polypropylene Sewer Pipe and Chambers. www.rehau.uk/hub

Through Wall Solutions Supplier Raises £2,500 For Local Hospice

RCM's customers and suppliers know no bounds when it comes to digging deep in order to raise funds to support the Douglas Macmillan Hospice, RCM's chosen charity. September 21st saw RCM host a spectacular Golf Day for its customers and suppliers at the prestigious Forest of Arden Golf Club. Customers and suppliers sponsored holes on the golf course and extra cash was also raised on the evening by generous customers. The donations received a further boost with contributions from RCM's own staff. In total £2,495.53 was raised for the Douglas Macmillan Hospice. Alex Ward-Brassington, Fundraising Manager at Douglas Macmillan Hospice was recently presented the cheque by Ian Quinton, MD of RCM.



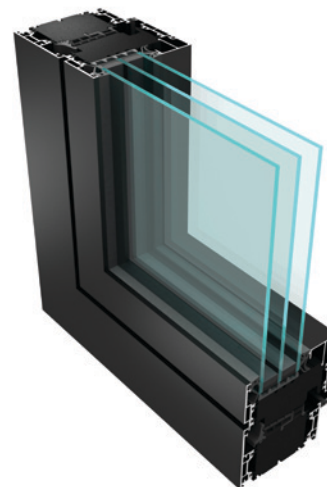
'I am truly proud of our customers, suppliers and staff for being so very generous in supporting our chosen charity the Douglas Macmillan Hospice. The Golf Day as a huge success with many teams competing for prizes which were awarded during the evening ceremony. Our chosen comedian Aaron James completed the success of the event by entertaining everyone thoroughly at the evening dinner. I would like to say a big thank you to all involved for their participation, loyalty and huge generosity. We look forward to organising further sponsorship events in the future.' (Ian Quinton, MD RCM) www.buildingboards.co.uk

Innovation Delivered

Comar 10 offers a new departure; a Passivhaus Certified "B" product with U-values as low as 0.66 coupled with processes that cut manufacturing costs by up to 70%.

The Comar 10 window range includes: inward opening, tilt & turn and fixed lights and are internally beaded and glazed; U-values as low as 0.66 W/m²K; Cut manufacturing costs cut by 70%; certified by Passivhaus Institute for cool temperature areas; future-proof & energy saving; high thermal insulation with ground breaking technology; 90mm deep outer frames; minimal care & maintenance.

www.comar-alu.co.uk



Opening The Way For Kalwall®

Structura UK has formed a strategic partnership with RAICO Bautechnik GmbH to develop an adaption of their THERM+ curtain walling system to accommodate Kalwall®, considered to be one of the most insulating light transmitting panel systems available.

The THERM+ framing system offers a wealth of possibilities such as the facility to conceal fixings and screws making for a seamless finish and the flexibility to use a frame in aluminium, timber or steel.

It also presents the opportunity for semi-unitising the panels which can incorporate windows, Kalwall or a combination of both. This allows for monolithic, single action installations which save time on site and give excellent cost benefits together with a high performance long life cycle.

This new system variation is the result of intensive research and development at RAICO's in-house testing facility in Pfaffenhausen, Bavaria. It has passed a series of assessments designed to replicate various CWCT (Centre for Window and Cladding Technology) criteria and EN 13830 "Curtain walling - Product standard". Testing was completed using the RAICO THERM+ 56 A-I system with a standard Kalwall 70mm panel.

It is anticipated that one of the first installations to use this solution could be the Japanese Moshimo Skylight Restaurant in Brighton. Here, Structura and RAICO are working closely with architects studioSPOON, structural engineers Atelier One, Brighton Council and English Heritage to try to realise this cantilevered restaurant extension suspended several storeys high over Bartholomew Square. The new system makes this daring and innovative project viable and will make use of the versatile stick frame by using steel, aluminium and timber backed curtain wall.

www.structura-uk.com



We have a
style to match
yours

Traditional and modern gutters,
pipes and hoppers come in a
comprehensive range of
aesthetic styles, materials and
colours to suit all buildings and
budgets.



YEOMAN
RAINGUARD
RAINWATER SYSTEMS

For more information please call

0113 279 5854

or email

info@rainguard.co.uk

Aluminium



GRP



Cast Iron



Copper, Zinc & Stainless Steel



www.rainguard.co.uk



Experience A Purple Patch With Vicaima

When it comes to inspiration ideas for interior doors, few companies bring the wealth of fresh design and stand out performance as Vicaima manage to do so every year. Entering a purple phase for their much loved Interior Door Selector (IDS), the 2017/18 edition has

surpassed even Vicaima's high standards, with the introduction of no less than six new ranges and a world of new colour and finish options.



is certain to spark creative interest for their many markets; including housing development and hotels, together with numerous public and private sector applications.

Available both in printed format and for download via the Vicaima website, the new Interior Door Selector sets out product ranges in a

clear and easy to navigate format. Each range includes quality colour imagery to illustrate the products design potential, together with key facts to ensure the chosen model is right for the project. For specifiers with a keen eye on budgets, the IDS also includes a useful Price Indicator Tool, which enables easy price comparison across different ranges, making final door selection so much simpler.

Among the many new and exciting ranges making their first appearance in the Vicaima 2017/18 Interior Door Selector are some exciting door ideas, including: M Range, a refined take on the Classic panel door in a wide section of lacquered colours; EX70 and EX20, two new collections that offer striking grain direction and a fusion of face finishes; The Rustic Collection, real quarter cut Ash veneer in a selection of four new stain finishes to give an open grain appearance. These and many more on-trend and visually stunning finishes make up a truly visionary compendium of interior doors for every application.

To download your copy of the new 2017/18 Interior Door Selector, visit www.vicaima.com and select brochures, alternatively call 01793 532333 to reserve a printed copy or for further information.



A Complete Solution

Pyroguard and Aluprof complete testing programme on new aluminium framing system collaboration

Bringing together more than eight decades of technical industry experience, fire glass experts Pyroguard and fire door & window partition systems specialists Aluprof have completed an ambitious testing programme for a new cost-efficient, slimline fire-resistant glazing system for the European market.

Following two years of collaboration between the leading manufacturers, the new MB-45EW framing system has been developed and rigorously tested for applications across the UK, France and The Netherlands, adhering to E30 and EW standards which are required in these regions. A first for the European aluminium market, the non-thermally insulated door and window system combines cost efficiency with basic minimum depths. Exceeding the current E30 and EW requirements with additional radiation reduction, the modern aluminium system allows for greater aesthetics through tighter tolerances, achieving a more slender profile of window and door structures.

Suitable for internal applications, the framing solution is available as smoke-proof wall partitions and doors, compliant with EN13502-2. As the first fire glass tested and certified for the new system, the solutions utilise Pyroguard Integrity Plus glass, delivering EI 15 and EW30 fire performance along with 1B1 impact protection. With EW fire performance, the glazing gives advanced protection for people and property, while its structural integrity and lightweight profile allows for installation in even the most challenging applications.

“Glazing often plays a vital role in modern buildings, but meeting functional safety requirements needn’t come at the expense of

aesthetics,” says Vince Crook, Technical Director at Pyroguard. “By collaborating with Aluprof, we’ve been able to develop a fully-accredited and certified framing solution which utilises the key characteristics of our high-performing products – namely design and 1B1-classified impact protection, in addition to essential EI 15 and EW30 safety requirements.

“To ensure sufficient safety from the new framing system, we’ve also worked closely with our testing partner Efectis to develop a stringent testing programme that gives a large scope of application. Gaining full accreditation, the programme has demonstrated the strengths of our combined efforts, resulting in a product which exceeds the current requirements in the UK, France and the Netherlands while remaining a cost-effective option for specifiers.”

Rafał Majza, Export Director at Aluprof, added: “As we’ve strived to deliver a solution which is effective, cost-efficient and aesthetically pleasing to suit the needs of specifiers today, we’ve had to overcome several challenges. The expertise of Pyroguard has been invaluable and by combining our efforts throughout the testing phase we have created a solution which exceeds current safety requirements to deliver advanced protection.”

Optimising design opportunities for architects and specifiers, Pyroguard creates bespoke glazing solutions which meet the requirements of comprehensive certifications. From basic integrity only E-rated glazing through to high performance, insulating EI-classification solutions, Pyroguard has 30 years of experience offering the widest range of fire-resistant glass from a single supplier. www.pyroguard.eu/en



Aluprof On The Square

Built in 1772, 'Square Chapel' is a red brick built Georgian Chapel and one of only few square churches ever built. Almost thirty years ago, in 1988, the Square Chapel Trust was set up to save the Grade II listed chapel to convert it back into a place of worship and a performing arts centre in Halifax.

After gaining popularity in the town, in 2012 a further £5.9m development fund was raised to be invested in the complex, with £3.9m by way of Arts Council funding. Located next to the Piece Hall in Halifax, the Square Chapel now includes a second 120 seat auditorium, that provides a cinema with live screening facilities.

Today, the Square Chapel forms a popular complex which offers the best in film, theatre, live music, comedy, family shows and workshops complete with a large bright foyer, where refreshments are served daily. The foyer comprises of a strikingly designed and decorated arrowhead roof construction, designed by architect Evans Vettori.

Aluprof have provided full height curtain walling in their MB-SR50N system which has been supplied in a dark grey powder coat. The curtain walling was designed and installed by the specialist envelope contractor H-K-L of Sutton-in-Ashfield. As the new roof to the foyer could not be loaded onto the existing structures of the Piece Hall or Square Chapel,

everything is carried on three central structural steel trees. The tree metaphor is echoed in the leafy colours on the angled canopy soffit, which has led the two entrances to be dubbed either the 'spring' or 'autumn' bridges with green being the dominant shade on one, and brown on the other. Completing the theme, the etching of branches on the south wall glazing has been artistically provided to help reduce solar gain.

Amongst the characteristics of the MB-SR50N system, is a wide choice of 50mm wide mullion and transom profiles complete with substantial assembly cleats that offer single glazed modules of up to 450Kg to be carried. The system includes a continuous thermal barrier made of HPVC insulating material complete with profiled EPDM glazing gaskets which makes it possible for the system to achieve very high levels of insulation to meet demanding BREEAM ratings.

Aluprof's extensive range of systems extend to unitised curtain walling, sliding folding doors, commercial doors systems and a wide range of window systems, all of which are increasingly being specified on a variety of residential and commercial projects across the UK and overseas. All systems are designed and installed by selected, specially trained companies to ensure each product meets Aluprof's exacting standards. Further information is available on the company website at aluprof.co.uk.



Harmonious Access From Tormax

Part of Birmingham City University, Royal Birmingham Conservatoire is a £57 million teaching and performance facility that attracts internationally renowned performers and teachers, as well as the highest calibre students. TORMAX was contracted to install prestigious automatic revolving doors to the two main entrances as well as an automatic swing pass door and set of sliding doors. Working with main contractor Galliford Try, TORMAX created an elegant lobby by positioning a set of automatic sliding doors between the three-wing revolving door and main foyer. To one side of the revolving door is located an automatic swing door, offering an alternative for less able users and to make deliveries easier. This combination is intensely practical, helping maintain the ambient internal temperature by minimising heat loss from the building. To the south of the building, another three-wing revolving door is also located.

This project clearly demonstrates the full scope of the TORMAX range of technologically advanced automatic door operators. Tried and tested in busy locations worldwide,

TORMAX 5251 door drives power the two revolving doors. Deliberately high torque, the TORMAX 5251 is designed for reliability, with sensors automatically adapting performance to take account of external factors, such as a build of dirt or strong winds, for example. The 1301 swing door drive is from the technologically advanced iMotion range of Tormax operators, the motors of which feature none of the working parts that usually wear out, such as gears and brushes, making them one of the most durable and reliable on the market today. The internal set of bi-parting sliding doors are driven by two TORMAX 2201 operators which are housed in a particularly slim casing, offering an unobtrusive automation for the minimalist entrance. All the doors have a bronze anodised finish to harmonise with the modern façade of the building. www.tormax.co.uk

Former Headquarters Of The Greater London Council Gets An Energy Efficient Facelift

For 64 years, County Hall was the home of the British Government, in the form of the London County Council, and later the GLC (Greater London Council) and ILEA (Inner London Education Authority). In 2016, London venue company 'etc.venues' opened a conference and event space in County Hall. It features 20 multi-purpose spaces including two river fronting suites for groups up to 900. A vital part of the client's brief was restoration of the period features. Synergy Architects turned to Selectaglaze, to install thermal and acoustic efficient secondary glazing, except where there were dado rails, which the Conservation Officer wanted to retain.

Because there were no rising ducts of a satisfactory size, air needed to be extracted through the existing windows. Secondary glazing was therefore required to the lower part of these windows.

Selectaglaze installed 148 secondary glazing units. Those units exceeding 1600mm high were fit with a 6mm toughened low-E glass. A minimum glass to glass cavity of 150mm allowed for optimal noise reduction. All aluminium profiles and timber grounds were powder coated in a matt grey finish. The installation of secondary glazing has enhanced business prospects at 'etc.venues', with conference rooms, event suites and bars now providing an ambient and warm environment to suit any event. Established in 1966 and Royal Warrant Holder since 2004, Selectaglaze is the leading specialist in secondary glazing. It boasts a product range to suit all projects from Listed buildings, to new build hotels. Contact Selectaglaze on 01727 837271/ email: enquiries@selectaglaze.co.uk or visit: www.selectaglaze.co.uk





Tile Of Spain At Cersaie 2017

Challenging the role of ceramics in the design and build industry, Cersaie 2017 offers fresh insights into the latest and most innovative surfaces with over half of its 869 exhibitors from the ceramic tile sector. The Spanish tile manufacturers were a big draw to a global audience that had grown impressively (up 4.7%) from last year and designs included a wealth of choice in style, finish and colour. Here are some key looks...

SPANISH ORANGES

As bright as a Seville orange, tiles with gorgeous glazes and intense pops of colours were to be seen amongst the Spanish tile manufacturers' new products. Either used to create different compositional possibilities and mixed with other neutral tiles or used singularly to create impressive blocks of colour, orange from soft terracotta to vibrant citrus is a popular choice.

1. Diamond wall tiles in a 10x20cm format by Mainzu come in a variety of colours including Tiger, Artic, Graphite, Pearl, Esmerald, Green, Rubi and Sapphire. www.mainzu.com
2. High-performance Todatech porcelain by Todagres uses vibrant colour to add impact to a vast public space. Available in six formats. www.todagres.com
3. In a wide range of Mediterranean colours Lins tiles created by Yonoh for the Harmony Collection by Peronda look very striking in Pumpkin. 20x20cm format. www.peronda.com

RICHLI VEINED

Marvellous marble-effects are steady sellers, but this year the veining effects of new products are increasingly dramatic in design and the more sumptuously striated the better. Bathroom splashbacks and kitchen countertops made the most of the striations in large-format porcelains that cleverly imitated the premium marbles. Black was a noticeable winner with all black and pure black decorative schemes making a dramatic impact, but closely followed by all white, all grey and all golden tones.

4. Wall and floor tiles in 100x100cm, 150x15cm and 100x250cm formats make Inalco's Slimmker porcelain surfaces ideal for a variety of locations. Shown here in Storm. www.inalco.es
5. Dramatically veined Grespania's Coverlam big-format porcelain tiles from its Medusa range make an impact on a wall. Various thicknesses and formats available. Antracita shown here. www.grespania.com



RUSTY METAL

Tones of copper, brass and other metals with a rusty finish are an important interiors story with a Corten-effect finding its way into bedrooms, bathrooms and kitchens.

Metal-effect porcelains are tapping into the trend for an industrial vibe and the rusty or coppery finish is a warmer variation on the original factory look.

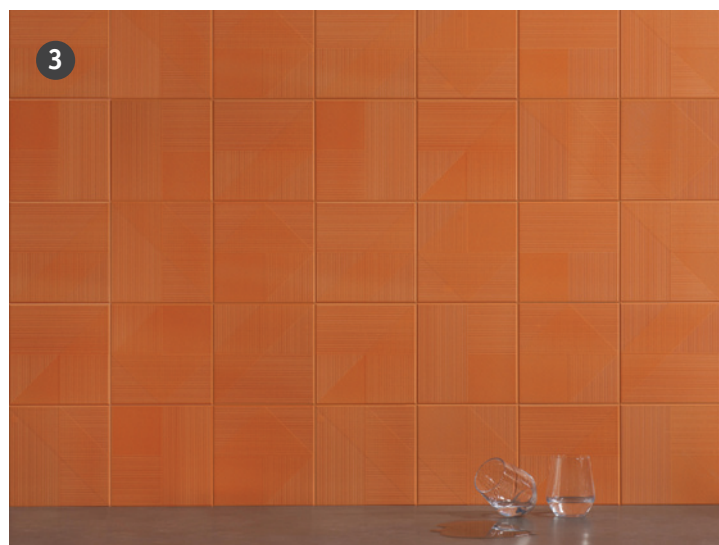
6. Metal-effect porcelain gives a contemporary look to this wall of 240x100cm formats by Baldocer. Shown here in copper. www.baldocer.com
7. For those who like their metal effects a little more muted, Stripes is a stoneware glazed tile range by Dunes that comes in a subtle copper. 25x25cm format. www.dune.es

ABOUT TILE OF SPAIN

Tile of Spain is the voice of the Spanish tile industry, encompassing more than 100 tile manufacturers. Renowned worldwide for an inspiring blend of aesthetic and technical innovation, Spanish tiles draw on a rich heritage of skill and creativity, while remaining at the cutting edge of design.

Manufactured in Spain and widely available in the UK, these products embody the spirit of an industry that prides itself on proposing beautiful, meaningful and high-performance solutions to flooring, wall coverings, furnishing and external paving and cladding.

For further information on Tile of Spain: www.tileofspain.com





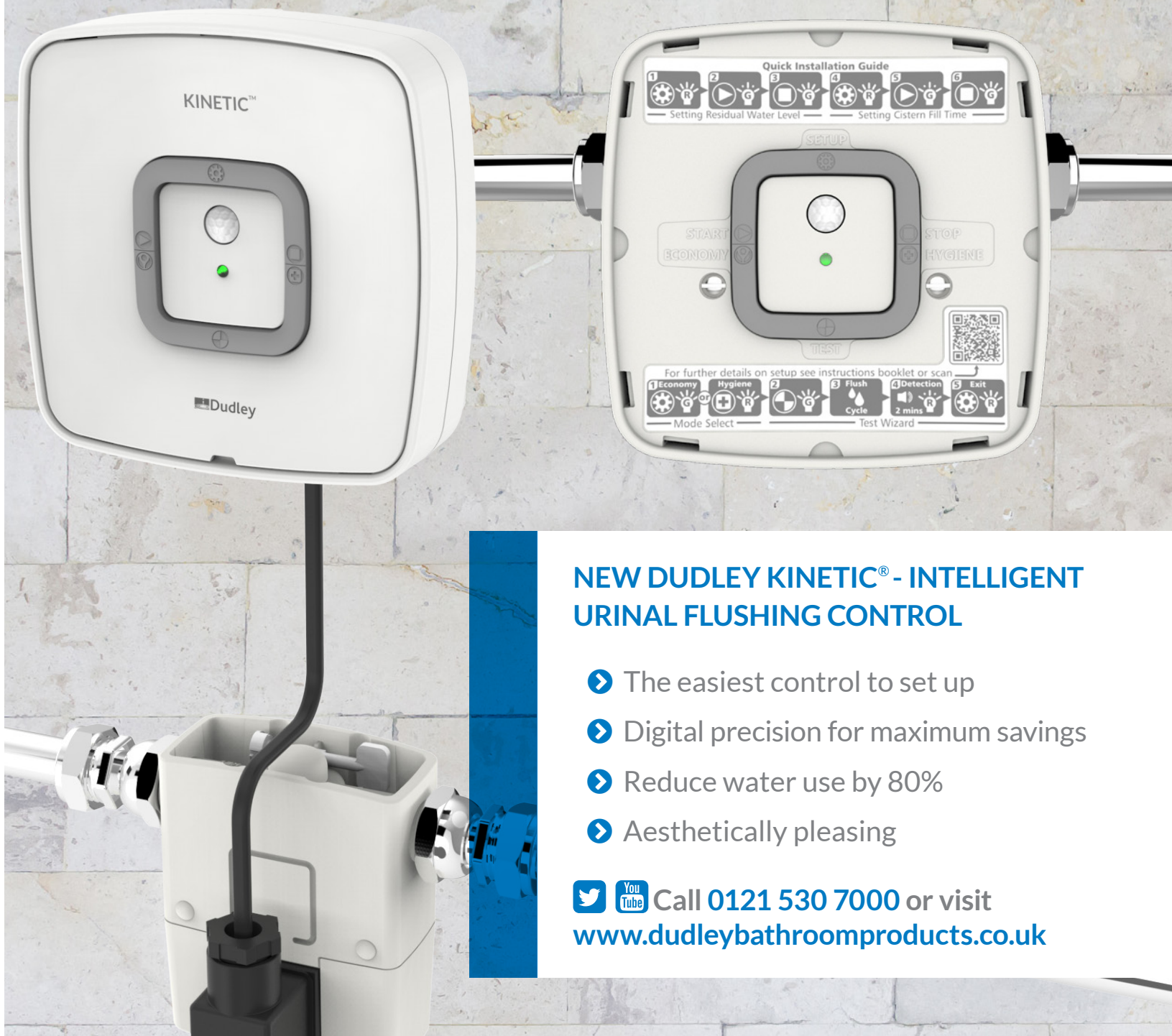
A Burning Passion For FIRE

The German premium manufacturer of firing technology Spartherm proudly presents an exclusive range of bioethanol fireplaces branded ebios-fire® which are now also made available for the discerning customer in Great Britain. Made And Tested In Germany - in order to provide an optimum of customer service, the expansive range of ebios-fire® models comprises both standard and made to measure built-in fireplace models in almost any thinkable layout.

Great versatility, product safety and outstanding German quality are key values at Spartherm's production facilities where all ebios-fire® models are originally designed, crafted and tested by passionate, skilled craftsmen. Test certificates issued by TÜV Germany further underline the outstanding safety of ebios-fire® bioethanol fires, which feature a wide choice of manual and automatic bioethanol burners.

Versatility Is key - The ebios-fire® range of products is available in a vast variety of finishes meeting the requirements of architects and interior designers on an international level. Spartherm - The Fire Company www.spartherm.com

SMART CONTROLS FOR YOUR URINAL PROJECT



NEW DUDLEY KINETIC® - INTELLIGENT URINAL FLUSHING CONTROL

- The easiest control to set up
- Digital precision for maximum savings
- Reduce water use by 80%
- Aesthetically pleasing

  Call 0121 530 7000 or visit www.dudleybathroomproducts.co.uk



Dudley
Water saving solutions

Easy to fit
and service



Made in the
UK



Saves time,
money & water





Tata Technologies Innovation Centre Adds Style And Practicality With Encasement

Tata Technologies' new £20 million European Innovation and Development Centre (EIDC) in Warwick has used more than 70 'Forma' aluminium column casings from Encasement to conceal structural steelwork in the three storey building.

Designed by Birmingham based architects, Webb Gray, the EIDC's steel frame curtain-walled structure provides 60,000sq.ft of office space for around 600 staff and was built by BAM Construction on a 3.85 acre green field site.

Supplied and installed by Encasement, the column casings are used throughout the building on each of the three floors to conceal structural supports in the six extensive open plan office areas together with separate conference and presentation rooms and the ground floor restaurant.

Manufactured from 3mm thick aluminium and standing 3000mm high, the 530mm diameter 'Forma' casings also incorporate an acoustic lining to help dampen noise and reverberation in the office areas. They are also finished in a white PPC coating to integrate with the interior design and reflect natural light. While some of the casings are positioned around the perimeter of each floor, adjacent to the glazed facade, many have also been integrated into the design and construction of the interior workstations, storage facilities and desktops, with cupboard units and meeting tables being built around them.

In some locations, the lower half of the column casings are concealed by modular cabinets and integral desks, while in others, the storage and drawer units are designed to be slightly narrower than the column casing diameter, leaving the full height visible on either side, giving variety to the interior layout and adjacent meeting areas.

Encasement also supplied and installed a series of semi-circular column casings, which are used in individual offices and meeting rooms where the structural steelwork forms part of the partition wall. www.encasement.co.uk

Salice Products And Service Are Perfect For Neville Johnson

Salice UK are delighted to be supplying a selection of their furniture fittings for installation within the Neville Johnson furniture range.

For over three decades Neville Johnson has been creating innovative fitted furniture, offering bespoke solutions for any room or space. Using traditional techniques, fine materials and the incredible imagination of their talented team, they have progressed to become market leaders in their field.

Salice supply their Silentia integrated soft close hinge which features a shallow cup depth of only 12mm, permitting the use of this hinge in doors with even the deepest edge profiles. Specifically designed to combine functionality and style, Silentia provides silent and smooth closing action for all types of furniture doors and is available for the full range of applications - angled, wide opening and blind corner specification.



In addition, Salice's Futura concealed runner is specified for all drawer applications. Suitable for use with all versions of full-extension runners, Futura has options for self-closing units, and a push option for handle less furniture. Another key feature of Futura is its simple installation - the 3 way adjustment allows the drawers to be precisely aligned, and the tool free adjustment enables the removal of the drawer from both the front and the sides - particularly important for the bottom drawer in a set where access from below may be difficult. Furthermore, as the clip has been manufactured by Salice as a single piece, in carbon fibre rich material, the result is a lightweight, yet highly durable and strong finish. www.saliceuk.co.uk



Luxury Property Illuminated With tp24's Abstract LED Linear Light Fittings

tp24, one of the UK's leading LED lighting specialists were delighted to work together with Bristol interior designer, Sarah Bailey of SJP Interior Design, to provide light fittings for a luxurious 5-bedroom property which is situated in the popular village of Flax Bourton, Somerset.

Cavendish House is within the small and exclusive development, Cambridge Heights, which consists of a handful of luxury family homes offering stylish, modern day living. Boasting fantastic views over the surrounding countryside, Cavendish House has been recently renovated and refurbished throughout to an incredibly high standard and includes high specification fixtures and fittings throughout.

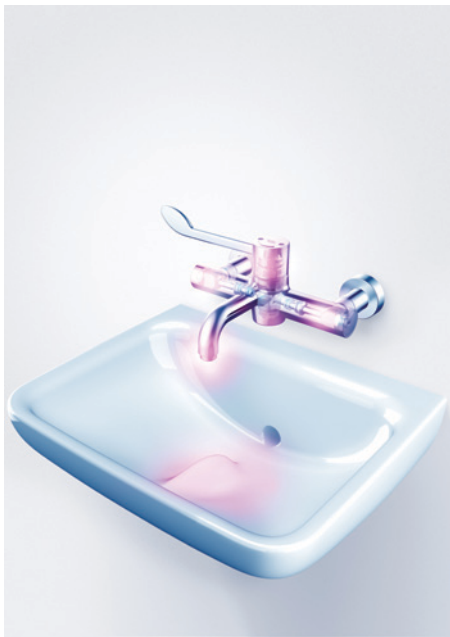
tp24 are commissioned to supply their LED lighting solutions for installation in many of the UK's premier housebuilders show homes, so they were able to draw upon their experience to supply the perfect light fittings to grace the ambience of this stunning property.

For the Sitting Room and Master Bedroom Suite lighting, SJP Interior Design selected tp24's Arlington 6 Arm Chrome Pendant, which is part of their revered Abstract LED Linear Lighting range. Designed

and manufactured by tp24, Abstract embodies contemporary design with clean, simple lines and is fully dimmable and comes with a two year warranty. Furthermore, Abstract's revolutionary design enables consumers, should they so desire in the future, to alter the look of their fitting by simply changing the orientation of, removing or swapping the arm for an alternative arm design.

Commenting on the project, Sarah Bailey of SJP Interior Design said, "tp24's LED lighting range combines archetypal design with lasting quality, and the Arlington fittings complement the room settings perfectly. I look forward to working with them on many more future projects as I know that I can rely on them for stunning products and reliable customer service".

For further information on the full range of LED lighting solutions from tp24, please telephone 01354 691919 or visit www.tp24.com



Bacteria Has Nowhere To Hide As New Sanitaryware Products Are Launched To Battle In-Hospital Infection

Healthcare bathrooms can, if not carefully managed, provide virulent breeding grounds for the growth of bacteria and the spread of infection. Luckily, new innovations from sanitaryware brand Armitage Shanks can help to fight bacteria and provide optimum hygiene and infection control within hospitals. Here, the iconic British brand discusses its new Markwik 21+ fittings and Contour 21+ clinical ceramics ranges.

About Markwik 21+

Features are used throughout Markwik 21+'s design to maximise antimicrobial effect. A manual thermal flush feature allows maintenance staff to override the thermostat and flush the fitting through with very hot water, preventing bacterial depositing. An integral thermostat enables water to be mixed closer to the point of discharge – eliminating the cold water 'dead leg' and minimizing warm water areas.

Auto-flush technology ensures electronic fittings that are irregularly used are flushed with water every day, preventing bacteria formation. A 'hydro-purge' facility flushes water through the pipework and inlets to ensure a debris free system after installation and enable flushing after chemical disinfection. Detachable spouts, one piece designs and demountable body components allow for complete washer disinfection, reducing the risk of *Pseudomonas aeruginosa* and *Legionella*.

About Contour 21+

The Contour 21+ clinical basin features advanced drainage to combat water pooling, a common source of bacterial growth. Its simple waste assembly ensures water drains instantly and vertically, through a smooth pipe system, free of steps Contour 21+ basins feature thinner, more angular rims, steeper slopes and a smaller back area—all designed to avoid water pooling and facilitate easy cleaning.

Research shows high levels of splashing occurs when taps run into clinical basins, spreading bacteria and viruses as far as two metres. Contour 21+'s HydroFin—an innovative fin on the product base to deflect splashing and reduce it by 90%.

The Contour 21+ range includes integral SmartGuard+ antimicrobial additive technology. This antimicrobial protection reduces possible cross-contamination and maintains surface cleanliness and hygiene across its lifetime. Further, the ultra-smooth glaze of SmartGuard+ has been designed to make it more difficult for bacteria to cling to the surface.

A seamless fit – and ideal for specifiers

The Markwik 21+ and Contour 21+ ranges fit seamlessly together, providing a fully integrated system and the optimum in clinical hygiene. Aside from the healthcare benefits, the products also fulfill the entire supply chain's exacting criteria.

The easy and flexible installation options of the new Markwik 21+ and Contour 21+ ranges makes them simple to install and maintain. Contour 21+ can be installed by one person in 7 minutes compared to the current basin taking two people 18 minutes. Furthermore, the product design makes both ranges easy to use. Hospital environments mean that infection can never be entirely eliminated. However, the use of intelligent sanitaryware can help to effectively battle bacteria and keep infection at bay.

For more information on Armitage Shanks' products, please visit: www.idealspec.co.uk.

La Vela



The worldwide patented burner system for restaurants, hotels, living areas, outside areas, as decoration or for wellness areas.

- Leaking arrestive through specialized wick system
- The supply allows a mesmerizing flame over a period of around 4-6 hours (depending on model).
- Due to the easy handling the La Vela can be used fast and effective.
- For the perfect fire enjoyment with an almost odorless combustion
- La Vela is available in 9 different sizes and therefore usable in a versatile manner.



Remmers Leads The Way With Low Emission Resin Flooring

Remmers Epoxy OS Color New is a coloured Epoxy Self Smoothing resin system suitable for industrial and commercial applications. Its high mechanical strength coupled with excellent chemical resistance makes it ideal for industrial environments whilst its innovative reduction in VOC's means it is perfect for commercial applications such as Schools, Hospitals or retail areas.

Epoxy OS Color New is one of a select band of Remmers Solvent free epoxy resins that holds AgBB certification thanks to a huge reduction in the use of harmful ingredients when compared to standard resin flooring. These market leading improvements come alongside the usual high-quality product performance that Remmers clients have come to expect.

The system is available in a range of standard colours but can also be produced to any RAL, BS or NCS colour to suit the designer's tastes. www.remmers.co.uk



Coloured Rads As We Head Into 2018!



The trend in radiators as we head into the New Year looks certain to be the increase in demand for coloured radiators! Stelrad offers most of its radiators in up to 35 different colours with a small time delay in delivery. We've all become used to the fact that radiators are available "in any colour so long as its white" to paraphrase a famous quote from Henry Ford.

But with radiators moving into the realms of décor rather than simply that of a heating appliance, people are looking for radiators that will match or contrast with the decoration in a home or commercial property. www.stelrad.com

Pendock Covers For Sevenoaks' Rebuilt Primary School

Pendock has recently supplied MX and CH pipe boxing profiles to cover pipe work at Sevenoaks Primary School, rebuilt as part of the 'Priority Schools Building Program.' Led and majority funded by the Education Funding Agency, along with the support of Kent County Council, the scheme represents a sustainable, fit-for-purpose and much needed replacement of the original 50-year-old building.

MX profile is a two-sided pipe casing, suitable for high or low levels and can be installed vertically, horizontally and at corners to cover pipework and heating services, soil, vent and rainwater pipes. Hardwearing and maintenance free, the ply boxing is manufactured at their Telford premises and can be supplied in a wide range of colour options.

Standard MX sizes range from 75 x 150mm up to 300 x 300mm but Pendock can also manufacture tailored versions of all of its product ranges to meet particular client needs. The MX range comes with a comprehensive range of accessories, including external and internal corners, butt joints, stop ends, access panels and a boxing pack to facilitate smooth installation and enable a professional finish to be achieved.

Also specified for the Sevenoaks Primary project were Pendock's CH, three-sided channel casing, offering a smart solution to the encasement of pipework and structural elements at mid-wall vertical or horizontal locations, including bulkheads and available in white melamine or laminate finishes. The melamine version features an attractive white plastic detail where the panels join. www.pendock.co.uk





Schöck Isokorb For All Three Phases Of Manchester's Adelphi Wharf

Manchester is a city rich in architectural styles and rightly proud of its industrial heritage. Something that is reflected in the design of Adelphi Wharf, a high-end development by Fortis, being delivered over three stages in Salford, alongside the River Irwell.

The lower levels consist of stout blue engineering brick, contrasting with the reactive colour-change panels of the upper levels. As the observer's position changes, these vary visually in tone and colour, which accentuates the many recessed balconies on the development.



In addition to the recessed concrete balconies, there are also steel balconies connected to the concrete frame. The latter having spans of up to 1.8m, finished with a metal mesh and timber decking. It is crucial that any risk of thermal bridging is minimised at these various connectivity points. So the use of effective structural thermal breaks are a critical element in the design.

Local heat loss is a major factor. Also, low internal surface temperatures in the area of the thermal bridge can cause condensation, if they are below the dew point. This is likely to result in structural integrity problems with absorbent materials, such as insulation products or

plasterboard. Mould growth is also a possible risk. To counter any such problems, Adelphi Wharf incorporates the Schöck Isokorb types K and KS structural thermal breaks; which are extremely effective and widely used solutions.

The Schöck Isokorb type K with compression module HTE-Compact and 80 mm insulation thickness, is a load bearing thermal break element for free cantilevered balcony construction. Whereas the type KS is suitable for cantilevered steel balconies and canopies. Both types transfer negative moments and positive shear forces and block the outflow of heat by means of a high-quality polystyrene insulation core.

The Schöck Isokorb types K and KS units guarantee totally verifiable performance standards, meet full compliance with the relevant UK building regulations and offer BBA Certification and LABC Registration. In addition to providing highly effective connectivity solutions for these two applications, the Schöck Isokorb range also offers a modular product for steel-to-steel applications – and there is even a maintenance free alternative to wrapped parapets.

When any Isokorb product type is incorporated in residential buildings, the required fR_{si} value – the temperature factor used to indicate condensation risk that must be equal to or greater than 0.75 – is always comfortably met.

For a free copy of the Schöck Thermal Bridging Guide and / or the Thermal Bridging Solutions brochure – contact the company on 01865 290 890 or visit www.schoeck.co.uk

DRU Maestro 75 Tunnel Gas Fire Reveals A World Of Possibilities For Home Improvers

DRU has released an exciting new addition to its Maestro collection of contemporary gas fires. Maestro 75 Tunnel is spectacular 'see-through' fire that can be installed into false chimneys, room dividing walls and other architectural features. With modern homes being increasingly open plan, it provides a solution for home owners as a room divider or to create a stunning focal point that can be appreciated from both sides of the living space.

It features the impressive DRU Dynamic Flame Burner system, which generates exceptionally high and dense flames, together with the exclusive DRU Eco Wave app, allowing the owner to control the flame pattern and gas consumption from a tablet or smartphone. With the fire being constructed almost entirely from glass, its appeal is further enhanced by Clear View non-reflective glass, which renders the glass almost invisible. In addition, the Maestro 75 Tunnel includes the exclusive DRU Easy Release door system, allowing easy access to the interior of the fire for routine cleaning and maintenance.

The balanced flue system of Maestro 75 Tunnel means that it can vented through an outside facing wall or through the roof, making it one of the most versatile gas fires in the DRU range. The addition of the DRU PowerVent® extended and motorised flue system means that it can be installed in previously inaccessible locations. www.drufire.com



Wilo Brings New Generation Of Tried And Tested Heating Pump To The Market



Wilo has launched the new generation of the Wilo-Yonos PICO series small circulators to the UK market. A range of new features has been added to this popular circulator primarily for residential homes and properties, for heating systems and air conditioning equipment. With this new version, Wilo has succeeded in not only upgrading one of the most established products in the market, but also to an extent, it has been able to reinvent it thanks to new functionality and ease of use. In addition to energy performance, ease of use also plays a major role in the new small pump. www.wilo.co.uk

UK Company Providing Water Technology Solutions Across Multitude Of Industries

A UK water technology company is the name behind some of the most recognised brands associated with the water and heating industry, supplying products from domestic underfloor heating installations to commercial large scale gas shut off valves. Watts Industries UK provides water based solutions to domestic and commercial installations across the UK, offering some of the most well-known global brands and ranges direct from its UK base. It enables solutions across heating spares, electro controls, combustion spares, valves for water and gas industries and products to enhance water flow and quality.

Watts group brands include Valpes, Bar, Socla and Microflex, whilst product ranges available from Watts include Black Teknigas and Electro Controls. Dave Raynor, Product Manager Watts Industries UK, said: "Finding solutions to issues faced across water industries is what we do best. Watts, and the brand names for which we are renowned, are synonymous with quality and reliability with many specifiers choosing our products for all projects they work on knowing that their expectations will be met." wattsindustries.co.uk



Tectite Range Extended

Tectite, the leading push-fit brand by Pegler Yorkshire, has increased its range offering to now include additional valve configurations benefitting from push-fit technology. Recently Tectite became the first UK push-fit fitting to achieve the prestigious BSI Kitemark standard across its entire range including Classic, Pro and Sprint from sizes 15mm to 54mm.



Tectite has become the choice product for many installers due to its unique and unrivalled features such as grip first grab rings which prevent any risk of full bore blow offs, pre-lubricated seals for reduced insertion force and a cooper, DZR brass or stainless bodies. The entire range is suitable for jointing with a wide range of tube materials, including copper, flexible metal, PEX and PB and a variety of steel including stainless and carbon. Additional features include non-demountable and demountable options. Furthermore, Tectite offers speed of installation and therefore provides installed cost savings, it negates the need for a hot works permit. www.pegleryorkshire.co.uk/en/home

New Fan-Assisted Radiator From Mitsubishi Electric

Mitsubishi Electric has launched a new fan-assisted radiator that works superbly with either traditional or renewable heating systems and delivers a faster heat up time and lower running costs than

the equivalent output double panel, double convactor radiator. The i-LIFE 2Slim is available in 1kW and 2kW models and offers a high heat output from 50 per cent less wall space (based on 45°C



flow). Paired with a renewable heating system such as an Ecodan heat pump, and choosing lower design temperatures, the i-LIFE 2Slim can also potentially increase the payments homeowners can receive from the Renewable Heat Incentive. At a slim 13cm deep, the 1kW model is suitable for almost any interior. At 737mm wide and 579mm high, the unit is almost half the size of an equivalent low flow temperature steel radiator.

<http://library.mitsubishielectric.co.uk>

Rehau Provides Tabs Solution For Landmark Office Development

The already iconic White Collar Factory in London's Old Street is now open for business – but key to the contemporary work spaces is the creation of a comfortable working environment.



That is why more than 150km of REHAU's Thermally Activated Building Structure (TABS) system was installed to provide low energy passive cooling.

In TABS, REHAU's PE-Xa polymer pipework is embedded within the concrete floor slabs. Chilled water is circulated through the pipework and this enables the slab to act as a heat sink; drawing the heat away from the useable space and creating a comfortable working environment for the occupants.

As well as being more sustainable and energy efficient than conventional air conditioning, it is also quieter, has no moving parts which could fail and generates less air movement providing a better working environment. www.rehau.uk/tabs

Studor Stokes Up Interest In Tec-Vent

Studor, the world leader in drainage ventilation and only specialist manufacturer of Air Admittance Valves (AAVs), has updated the Tec-Vent fire retardant AAV. The original version, launched in 2003, was the first of its kind in the world.

Manufactured from flame retardant material, the Tec-Vent is specifically designed for buildings such as schools, airports, hospitals, high-rise structures and other public areas, as well as in oil and gas, aviation and other industrial settings where flame retardance is a priority. The Tec-Vent can also be used domestically where fire retardance is important for residents' safety.

"The Tec-Vent is the perfect option for the design and construction community to specify and use instead of extending expensive flame retardant vent piping," comments Studor's UK Managing Director Stephen Taylor. "It offers considerable savings to penetrating through roofs or walls, whilst offering no compromise to safety or efficiency".

The Tec-Vent is UL Classified in the United States and has active approvals worldwide. It is sold across Europe, Asia and Australia, with installations including Doha International Airport and the Denver Convention Centre.

Protecting the trap seals in the drainage system, the Tec-Vent allows fresh air to enter and ensures that the pressure within the drainage system is properly balanced. When the flow stops the Tec-Vent closes by gravity and prevents any foul air and dangerous gases escaping and entering habitable space.

Studor has more than one million products installed each year across six continents, and its worldwide distribution network extends to more than 50 countries. The company has a rich history and specialist knowledge making it well placed to help architects, engineers, specifiers, plumbers, and end-users solve their drainage ventilation issues.

www.studor.net/tec-vent www.bystudor.com/tec-vent





Neaco Balustrade Called Into Service At New Fire Station

Improving accessibility has always been a recurring theme in the specification of Neaco's products and so it proved again when the company's balustrade systems were called into service for entrance ramps at Humberside Fire and Rescue Service's new cutting-edge Hull Central Fire Station.

The £2m city centre facility was designed by Jefferson Sheard Architects as part of a multi-disciplinary team established by Mace. The brief required an accessible and welcoming facility to serve the local community and Neaco's contribution was integral to this key design objective with powder coated aluminium handrails and balustrade to steps and two extensive ramps at the main entrance. The system was also specified with

glass infill panels for a first-floor terrace whilst Neaco's stainless steel balustrade was chosen for an internal stairwell.

Jefferson Sheard Architects' Project Lead, Mark Fannon commented: "Health and safety and accessibility are always key drivers on all of our designs. Neaco's balance of form and function enabled us to fulfill our brief with a cost effective solution, whilst achieving the desired aesthetic."

Neaco's range of handrails, balustrade and balconies offer a huge range of modular components options including a variety of stanchions, top rails and various infills including vertical rails, horizontal rails, toughened glass, tension wire and perforated panels. The company's diverse product range also includes structural glass, adaptive bathing facilities and versatile aluminium open grilles for flooring, screening, cladding and shading applications. Further information is available at www.neaco.co.uk

Worry Free Floor Access For Westgate Oxford

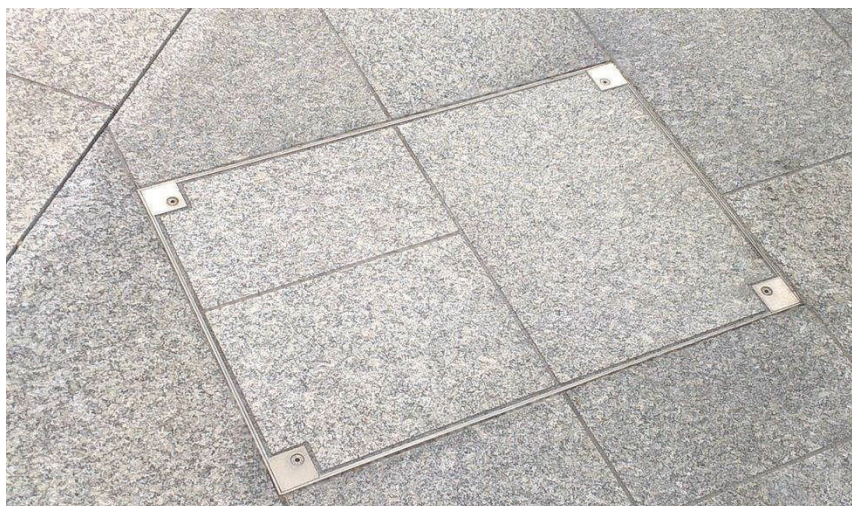
Over 80 of Howe Green's 7500 Series Medium Duty Stainless Steel Floor Access Covers have been specified by architect Chapman Taylor LLP for the Westgate Oxford development.

Westgate Oxford replaces the original centre that was built in 1970-1972. Landsec and The Crown Estate formed a joint venture, the Westgate Oxford Alliance, to undertake the project. Laing O'Rourke began construction of the 800,000 sq. ft. centre in spring 2015.

The Howe Green 7500 Series Floor Access Covers provide safe, easy access to underfloor services and high levels of performance for what will be a heavily trafficked pedestrian area. The 7500 Series can withstand up to a 5 tonne pneumatic wheel loading and, as they are made of stainless steel, are resistant to rust and corrosion.

The floor access covers are designed to be infilled with a floor finish to match the surrounding area. The covers have been installed throughout Westgate Oxford by specialist stone contractor Vetter UK. They have been infilled with various types of stone to blend seamlessly with the different hard flooring finishes used across multiple locations. The flush finish ensures the attractiveness of the flooring is not compromised and the risk of slip and trip hazards is reduced. The 7500 Series Medium Duty Floor Access Covers are tamper resistant, meeting the requirement for a secure access solution, a necessity in such a public place.

www.howegreen.com





Bona Titan – A New Generation Of Powerful Adhesives

Bona, the wood floor experts, has launched Bona Titan, a new supreme performance, silane-based adhesive for high value projects, very wide or oversized solid wood boards - or any installation where the quality of the bond has to be guaranteed. Bona Titan contains Titanium Technology - a revolutionary new formula comprising quadruple crosslinking that delivers superior durability and an unbeatable initial bond speed - even under challenging subfloor conditions.

Bona Titan can be specified with confidence to bond all types of wood flooring. Its superb shear strength makes installation easy and keeps even the largest, solid boards securely in place. If the subfloor is sound and dry, no primer is required. The hard, silane-based formula contains no ingredients that can migrate after curing, which eliminates all risk of discolouration at the joints.

The smooth, thick consistency makes it easy to use and produces stable ribs, an extremely high initial grab and zero

risk of hollow spots. The bond strength of Bona Titan will not diminish over time so the stability of the floor is guaranteed for the long term.

Bona Titan meets ISO 17178 standards and, in line with Bona's environmental strategy, is a safe, clean formulation which also carries EC1-R Plus, DIBt, Greenguard and A+ low emission certifications. Bona Titan is compatible with underfloor heating and can be used directly on metal or tiles. Floors bonded with Bona Titan can be sanded after just 12 hours. www.bona.com



High Capacity Channel System Drains Car Park At McArthur Glen, Designer Outlets, York

McArthur Glen, the leasing, management and marketing company has twenty one Designer Outlets in eight countries across Europe and is still expanding its business. The new Designer Outlets indoor mall at Fulford, York features over 120 designer brands including clothing, foot ware, eyewear, home wares, restaurants and cafés. The mall is set in 60 acres of landscaped grounds, including an extensive free car park available for customers.

Hauraton Limited introduced the RECYFIX® MONOTEC, surface drainage system in January 2016.

The McArthur Glen Designer Outlets mall, York, joins numerous installations successfully completed in the United Kingdom.

The RECYFIX® MONOTEC system was installed to provide surface drainage in a section of the car park's asphalt surface. Having a grating width of 100mm (Channel internal dimension) with an overall height of 230mm and a cross-section of 190.5cm², the 66 metres of channel supplied provide a total water capacity of just over 1260 litres.



The MONOTEC one metre long channel component is of a sturdy monolithic design where the HEELSAFE grating and the tongue and groove linking system are integral to the channel moulding. The whole unit is made of tough, virtually unbreakable polypropylene (PP) formulated to be very resistant to daily temperature fluctuations from frost conditions to strong sunlight, including the Ultra Violet (UV) spectrum. PP is naturally resistant to de-icing salt. Complying with the requirements of EN 1433, the PP is given its UV resistance by adding just sufficient stabiliser so that the structural strength of the material is unaffected and a consistent appearance is maintained. The MONOTEC channels have a loading category of up to Class D400.

Tim Connolly, Hauraton's Managing Director comments; "The tongue and groove features on the MONOTEC channels provides easy assembly of the moulded components and facilitates the alignment of the channel run so cutting installation time for the groundwork contractor.

All Hauraton surface water drainage systems' comply with European Standards (hENs) and carries the CE mark".

For RECYFIX® MONOTEC product specifications go to www.hauraton.co.uk. CIVILS section

For other case studies go to www.drainage-projects.co.uk



Robust Rainwater System For Bridlington's New RNLI Station

Bridlington's new lifeboat station is set to open, replacing the 114 year old original station which has become outdated, cramped and impractical. The design of the charity's new purpose built station not only considered the practicalities of a working station but also aesthetics as it stands in a prime location on the Spa Promenade adjacent to the beach - a convenient position saving precious minutes in the launch time of the lifeboat.

Echoing Art Deco lines, building materials for the new station were chosen for both design impact and durability, as the construction will have to withstand the Northeast coastal elements for many years to come. With this in mind a stainless steel rainwater system from Yeoman Rainguard was chosen. Functional yet stylish, 145 x 165mm box gutters and 80mm dia. downpipes were fitted complementing the sleek linear appearance of the lifeboat house.

The new two - storey RNLI lifeboat Station at Bridlington will not only look the part but will play the part too. There is space to house a new Shannon class lifeboat alongside the inshore D class lifeboat. The crew accommodation is more modern and the establishment will also include a workshop, changing and drying room, crew room, and a space for the charity's lifeguards to store their lifesaving equipment.

www.rainguard.co.uk

Plaswood Launches Gates To Complement Extensive Fencing Range

Plaswood has launched a range of gates to complement its existing and extensive range of environmentally friendly fencing products.

Made from 100% recycled plastic, Plaswood gates offer a smart, stylish and green alternative to traditional timber gates. Unlike timber, Plaswood products are impervious to the influence of water or damp and therefore will not rot, splinter, crack or degrade with age, offering purchasers a trouble and maintenance free alternative to timber products.

Available in jet black and earth brown the single and double gates come with a galvanized frame, along with steel posts allowing the gates to be set directly in to the ground. The gates can be finished with flat, round, chamfered or pointed tops and supplied with a locking system and access from both sides or inside only for increased security.

Plaswood gates complement Plaswood's existing range of fencing products which include:

Birdsmouth/Trip rail and Knee rail fencing: Available face fixed or mortised. Posts can be flat, chamfered or bevelled tops for trip rail fencing and with inverted 'V' notches for birdsmouth fencing.

Close board fencing: Creates a solid screen. Pales are fixed to both sides of the rails and staggered to create the look of a close board panel. The fencing can be supplied as prefabricated panels and posts or cut to size for fabrication on site.

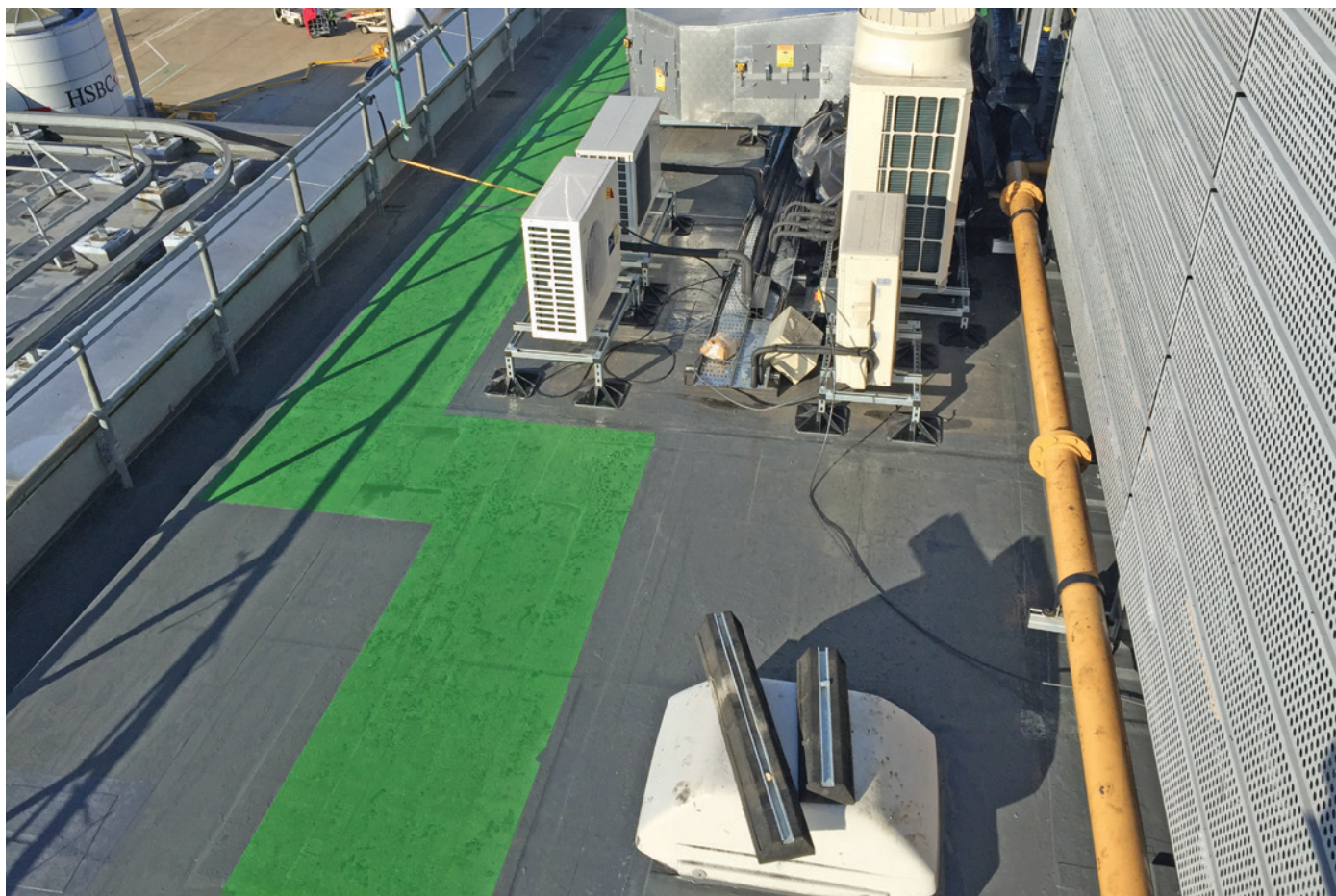
Log rail fencing and revetment wall: Ideal for use in curved borders or edging, it can be used as a water retention wall, edging walls, flower beds or just to create garden features. Available cut to size with pointed ends for easy installation.

Picket and pale fencing: Offering a neat and attractive structure, picket and pale fencing can be used in conjunction with either face fixed or mortised post and rail types.

All fencing is available in jet black and earth brown as standard, olive green, slate grey and multi-coloured options are also available.

www.plaswoodgroup.com





Kemper System Facilitates Award Winning Roof Refurbishment At Gatwick Airport

When the existing flat roof above the International Departure Lounge at Gatwick Airport's North Terminal was failing, Kemper System's liquid applied waterproofing was the first port of call. Working closely with contractors, Mitie Tilley Roofing Ltd, to develop a sound waterproofing solution, Kemper System's Stratex Warm Roof system was specified using its solvent-free Kemperol 2K-PUR liquid waterproofing as part of a full refurbishment of the 2,500 sq. m roof area.

Chosen for its odourless, quick application and versatile qualities, the fleece-reinforced, liquid waterproofing system by Kemper System meant contractors could adhere to the strict timescales and operational restrictions on-site. The substrate was cleaned prior to an application of Kempershield Type 1 Primer and Kempershield Vapour Barrier. A combination of 123mm Kempertherm FR and Kempertherm TR Tapered PIR Insulation Board was installed onto the main roof area, including the guttering.

Kempertherm TR comprises of a rigid PIR insulation board, a dense closed cell structure with a hard-top facing providing additional reinforcement to the top face that also provides the optimum substrate for the application of the liquid membrane. The polyurethane-based Kemperol 2K-PUR resin was then applied in a single, wet-on-wet process. The roof area presented numerous complexities and lots of detailing, including

five, large air-handling units, adjacent glazed facades and 36 separate large plinths with their own steel work, cable trays and pipe supports. Prior to application, contractors also removed the existing lead skirts, cover flashings and associated cementitious insulated upstands on each of the 36 support plinths.

The plinths, and more than 150 rain screen support steel work, were also primed before application of the fleece reinforced Kemperol 2K-PUR resin. The versatility of the Kemperol system and ease of application meant contractors could provide a watertight, seamless membrane that fully incorporated all of the flat areas, complex details and outlets on the roof structure.

Kemper System also developed full Inspection and Test Plans and Inspection and Test Records which were updated daily by contractors, and field technicians from Kemper System who visited the site on a weekly basis to ensure compliance and maximum quality during installation. Demonstrating first-class delivery within a live airport environment, Mitie Tilley Roofing Ltd and Kemper System won an award in the Liquid Applied Roofing and Waterproofing category for their work on the project at the annual NFRC (National Federation of Roofing Contractors) UK Roofing Awards (May 2017).

www.kempersystem.co.uk

Affordable Housing Development Benefits From Magply Performance

Off-site timber frame systems are evolving with an increasing market share in the construction industry with speed of build becoming a major factor along with fire risk and weather damaged products during the construction phase. One supplier addresses all three factors, including an affordable housing development in Essex, utilising Magply boards as an internal lining board to internal and external walls. The project at Buckingham Green, Basildon, has seen T.T.F.C Ltd., erect a total of six new homes. The two two-storey and four three-storey houses have been supplied in panel form by Wexford - based T.T.F.C Ltd.

T.T.F.C Ltd., now routinely installs 99 per cent of the Magply boards within its Wexford factory, before they are shipped to site and assembled by fully trained erection teams. They then use additional sheets of the strong and durable material to protect and complete interfaces, including within stairwells to flats and houses. This provides immediate continuity and fire resistance, while keeping the timber and insulation dry.

As a high performance, multi-functional board, Magply features a formulation that provides a fire-safe and environmentally friendly alternative to conventional plywood or OSB products. Additionally, the unique production process ensures chloride content at a negligible level of around 0.03%, ensuring Magply remains dry and non-corrosive whilst enhancing both stability and long-term durability. Crucially, Magply carries internationally recognised EN Standard, UKAS accredited certification confirming 90 minutes fire integrity and insulation under test conditions and Euro class A1 non-combustibility.

Furthermore, the range offers excellent racking strength, impact or pull-out resistance and all round ease of use in a variety of applications. www.magply.co.uk



Trapac Tile And Snow Guards For £3 Billion Chelsea Barracks Development

Klober Trapac® Tile and Snow Guards have been used on the ‘super-prime’ 13-acre site of the former Chelsea Barracks. The galvanised and powder coated grids are suitable for installation with any large or medium format, flat or profiled concrete interlocking tiles.

They provide a lightweight and easy-to-fit means of preventing tile fragments or other debris from falling to the ground.

Heavy falls of snow can be also retained against the grid as it melts and the water passes safely through it. Support brackets are linked using grid connectors and need no support batten.

The first of six phases to build 448 homes includes 123 designated as ‘affordable’ as well as five acres of gardens and open spaces, a public sports centre, shops and a children’s playground. Eight years after being sold by the MoD for almost £1 billion the £3 billion development on Chelsea Bridge Road, designed by architects Squire and Partners, consists of three blocks of up to eight storeys containing 74 apartments of 1 - 6 bedrooms.

For more information go to <http://klober.co.uk/shop/product/trapac-tile-and-snow-safety-grid>



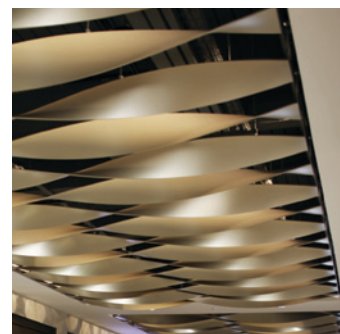


Twisted Fins Impress At The Oracle

As part of a recent refurbishment of the Holybrook Mall at The Oracle in Reading, Levolux was invited to provide a spectacular internal screening solution, in the form of a false ceiling. Following an ambitious design concept by HFM Architects, Levolux developed a custom screening solution, comprising a series of twisted aluminium fins that create an unusual and impressive feature ceiling that extends almost 30 metres.

It was crucial to maintain an open ceiling to allow for smoke extraction from the ceiling void. The Levolux site team collaborated with other trades to co-ordinate access using a scissor lift, enabling swift progress to be achieved.

Levolux's skilled fitters worked within confined conditions to install the twisted fins and supporting structure, 4 metres above the mall floor. The custom support structure, comprising horizontal support rails and vertical suspension rods, was devised to



secure the assembly of twisted fins 1 metre below a concrete slab. In total, Levolux supplied and installed 42 twisted fins for this project, fixed horizontally at 660mm centres. Each 300mm wide fin is formed from 10mm thick extruded aluminium plate, with a length of 4.7 metres.

The fins are precisely twisted, either in a clockwise or anti-clockwise direction, through 360 degrees along their length. The orientation of twist applied to each fin alternates and this arrangement was crucial for achieving the desired aesthetic. The twisted fins are finished in an attractive and highly durable metallic bronze coloured powder coating. This gives the fins a luminescent quality which is pleasing on the eye and provides an interesting focal point for visitors, helping them to navigate their way around the mall.

The newly refurbished Holybrook Mall is located within The Oracle Centre, which is owned and managed by Hammerson. It boasts many prestigious brands, including Hugo Boss, Timberland, Goldsmiths and Sunglass Hut. Under cover of the distinctive ceiling of twisted fins, from Levolux, retailers will be hoping for a prosperous end to 2017. www.levolux.com

Flexible Bollards By McCue – The ‘Fighter Jets’ Of Warehouse Protection

Bollards are the essential sentinels of damage prevention in the workplace – and thanks to McCue Corp, the humble protector is now armed with an array of features that makes your facility safety stronger, smarter and much more economical.

A finalist in ‘Best Innovation on an Existing Product’ at the illustrious MODEX expo, the McCue FlexCore Bollard’s flexible, shock absorbing properties help it deflect impacts – and its durable, high-visibility plastic shell is rust, scratch and dirt resistant.

Like many McCue products, the company’s designers stepped into the shoes of customers when creating the FlexCore Bollard. Traditional core-drilled or plate-mounted bollards can withstand impacts, but cracked concrete, permanent deformation and unsightly erosion through rust, flaking paint or general wear-and-tear create a multitude of maintenance costs and problems. With the Flexcore Bollard, these issues are greatly diminished.

Utilising similar technology to high-performance aircraft and military vehicles, McCue’s innovators implemented a high-strength spring-steel post attached to an industrial shock absorber for the Bollard’s core. For the exterior, the steel post carries a rubber load ring that allows the cover to rotate on impact, flex and reform.

This triple-pronged protective process not only saves the bollard, it protects the vehicle or piece of equipment that comes into contact with it.

On top of this, installation is simple and fast, with no trip hazards and fully hidden hardware. This, combined with the ultra-low maintenance properties of the bollard, adds up to a whole lot of savings over an extended period of time. www.mccue.com/uk





Marmox Thermoblock Tackles Thermal Bridging Around Harrogate Home's Basement Structure

Some 180 Marmox Thermoblocks have been supplied to a regional builder for the construction of a high specification home near Harrogate, with their unique combination of insulating and load-carrying properties being used to tackle cold bridging where the two storeys above ground meet the basement structure which contains a swimming pool and other recreation areas.

The five bedroom property has been built by Dobson Construction with a beam and block ground floor being supported off the in-situ concrete basement walls. The partially filled external wall of dense concrete blockwork, with an outer leaf of quarried stone, was then raised on the continuous course of Thermoblocks.

The 65mm x 215mm x 600mm Thermoblocks have been laid

on a mortar bed with the special Marmox Multibond adhesive being used to seal the stepped joints between the units. As a loadbearing composite product Thermoblock has been developed to be incorporated into various wall constructions as a horizontal layer, equivalent to a course of bricks, in order to address a critical area of heat loss, thereby reducing energy bills and making a significant contribution to SAP (Standard Assessment Procedure) calculations. Each length of Thermoblock is comprised of ultra-high performance XPS insulation, encapsulating miniature columns of concrete, while the top and bottom are covered by alkali resistant glass-fibre mesh, retaining a surface of fibre reinforced polymer concrete to facilitate bonding. The concrete columns have a very low conductivity so do not present thermal bridges themselves, and when coupled with the highly insulating XPS insulation core, a combined thermal conductivity of 0.47W/mK is achieved. www.marmox.co.uk



The Silence Of International Design

Setter Architects in Israel have designed stunning new offices for several international companies, including Palo Alto Networks, one of the world's most innovative technology organisations. The link between these projects is the way their interiors all benefit from high performance acoustic ceilings manufactured by Trolldtekt in Denmark.

Palo Alto Networks is a company involved in developing cyber defence solutions. Located on the 24th floor of a complex of multi-storey office towers in a colourful and historical part of Tel Aviv, the design inspiration is the introduction of eclectic low-tech external elements to the interior. These include steel window profiles and garage doors, exposed bricks, old textured glass to divide public spaces and historic artefacts.

All employees, including managers, work in open spaces located at the perimeter of the floor, alongside the windows. Transparent high partitions enable intimacy and improve acoustics, yet allow the urban feel of the outside environment to flow in.

Palo Alto benefits from stunning aesthetics and controlled environments which absorb the sounds and reverberations from hard surfaces and the natural echoes of a very busy offices. The superior acoustic performance of the ceilings is combined with different forms of lighting, air-conditioning and amplifiers. Apart from high sound absorption, other benefits include durability and natural breathability coupled with low cost performance and sustainability as documented by Cradle to Cradle certification at silver level.

Trolldtekt natural wood wool ceiling panels are widely specified throughout the UK, Europe and internationally for many different buildings as well as for refurbished interiors. They are available in various sizes and in four grades from extreme fine to coarse. Although most are used in their natural untreated state, they can also be painted in virtually any RAL colour. www.trolldtekt.co.uk

First Phase Of €10m Dublin School Transformation Complete



Tyrone-based Western Building Systems (WBS) have completed the first phase of a major contract at Firhouse Educate Together National School, Dublin 24 with a total contract award figure of €10,299,000.00. Western Building Systems was appointed to complete the build of two new schools at the Firhouse Campus.

The project involved the detailed design, construction, removal of existing schools, landscaping and access route improvement for the site which accommodates two schools; Firhouse Educate Together National School and neighbouring Irish speaking school, Gaelscoil na Giuise. WBS also recently completed a major new contract at Letterkenny Educate Together National School, Co Donegal.

The project included the construction of a new three-storey building containing 24 classrooms as well as a GP Hall, a library / resource room and other versatile multi-purpose accommodation blocks. The outside area now includes soft and hard play areas, 3 ballcourts, foot and cycle paths, 36 bicycle spaces contained within shelters, boundary treatments, pedestrian and vehicle access roads and car parking. www.westernbuild.com

Yeoman Shield Help To Maintain Standards At Oldham School

The new building of North Chadderton School, Oldham was built in 2013 without the provision of wall protection to the school's interior walls. Facilities Manager William Wheatcroft soon noticed that the plastered, white walls, were suffering marking and superficial damage detrimental to maintaining the school's high standards.

Yeoman Shield, manufacturers and installers of wall & door protection products, were called in to survey areas in the school most needing wall protection,

where it was decided that 2.0mm thick FalmouthEx protection panels would be the answer to stopping the continual damage. The first area to be fitted with Yeoman Shield FalmouthEx protection panels at 1250mm high, in white, were the dining room, boys WC on the ground, 1st & 2nd floors, reception exit area and along the flat to raking wall of the Assembly Hall Stage. Other areas which have received the same treatment over the past 2 years have included, staircases, refuse points, sports exit lobby, performing arts and music centre along with staff changing facilities. www.yeomanshield.com



A Sound Solution From SE Controls For The Recording Rooms Student Accommodation

The Recording Rooms, one of Birmingham University's newest student accommodation blocks, is using an integrated smoke and heat exhaust ventilation system from SE Controls to provide smoke free escape routes for more than 250 students. Located in the Selly Oak area of Birmingham near the university campus, the £12.5 million building was designed by Glancy Nicholls Architects and incorporates 267 bed spaces in five different room styles including cluster en-suite, studio apartments and even a penthouse, as well as a gym and communal lounge.

Within the Recording Rooms, which takes its name from the recording studio that was originally located on the site, there are three individual zones, ranging from three to seven storeys high, with each having a dedicated smoke control system linked to the building's master BMS and fire protection system.

The SE Controls system is designed to protect the building's four stairwells and corridors on each floor, by keeping them free of smoke and enabling clear escape routes to be maintained in the event of a fire.

Two of the zones, which are three and four storeys high, each has an escape stair core protected by automatically operated side hung windows on each floor and automatic opening vents (AOV) at the head of the stairs. The systems in each zone are operated by SE Controls OS2 SHEVTEC Controllers linked to the OSLoop Control System. The seven-storey zone incorporates two escape stairs, which combine a mechanically ventilated smoke shaft with natural smoke ventilation, incorporating automatically operated smoke doors, and side hung windows, as well as AOVs at the head of stairs and tamper proof MCPs. www.secontrols.com





New Tyvek® E-Guard W1 Provides Peace Of Mind On The Exposed Cliffs At Mevagissy

Any high-spec timber build demands the very best in envelope protection, both during construction and once occupied, but particularly in places of great exposure from the elements. When Cornwall Timber Build came to specify a suitable reflective breather membrane for the walls of a new housing development on the rugged Cornish coastline, they found that only new Tyvek® e-Guard W1 ticked all the right boxes.

This means that, in addition to excellent low emissivity values, the project also benefits from superior UV resistance while the membranes are uncovered, plus enhanced airtightness, and crucially, complete confidence in water hold out (at above TRADA recommendations). All these advantages come naturally to Tyvek®, which has demonstrated its reliable performance time and time again, both in rigorous testing and over many years in the field.

Situated on the cliffs at Mevagissy, new build housing by Cornwall Timber Build benefits from the multiple qualities of new Tyvek® e-Guard W1, a metallised breather membrane with high thermal values and above W1 water hold out.

New Tyvek® e-Guard W1 for walls occupies a unique position in the market by offering above W1 water hold out. TRADA recommends W1 as a minimum for sites of the level of exposure of this location. Cliff Road in



Mevagissy, as the name suggests, is situated on high ground and at the mercy of all the variety and power of the Atlantic weather. Tyvek® e-Guard W1 delivers an impressive 1.7m water column, a near passive standard of airtightness, resistance to four months UV exposure, and all the dependable vapour permeability for which the leading brand is famed.

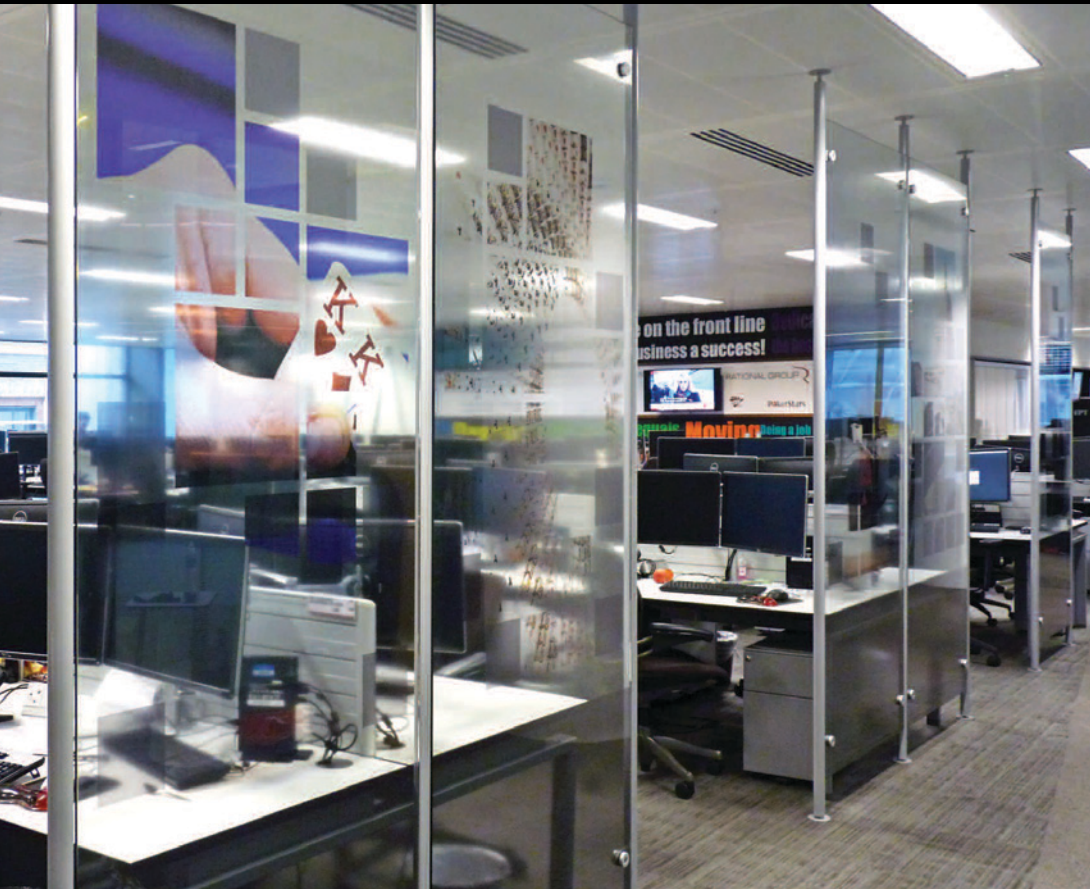
In terms of reflective capacity, metallised Tyvek® e-Guard W1 is certified as having a thermal resistance value for all cavities larger than 20mm of 0.75 m²K/W (using the NPL guarded hotbox method) and reflects 95% of heat radiation, providing interior comfort throughout the year. The product has also recently been granted STA AssureGold accreditation

“When the building components for the site were being prepared in the factory,” says Stuart Dewey of Cornwall Timber Build, “we knew that the location was classified as severe exposure. This limited our choice of breather membrane to those with a W1 or better water hold out. Most metallised membranes offer only a W2 (50mm water column) rating but Tyvek® e-Guard W1 is far superior. In fact, its 1.7m water head means that we can use this material all over Cornwall and the rest of the UK, in any type of geography, while meeting and even exceeding industry guidelines.”

There are five 200 square metre plots in the Mevagissy development, offering high quality timber frame homes, with external finishes varying between natural slate and block and render. Eventual occupants can look forward to enjoying not only the beauty of their location, but also comfortable interior conditions and lower energy bills, even if the weather outside is travelling through Cornwall’s traditional extremes. www.construction.tyvek.co.uk

MAST SCREENING

PAT.2274974



Standard & custom made items, design & build services, quick lead times

Tel. 01923 818282 • Fax. 01923 818280 • Email. sales@shopkit.com • www.shopkit.com

SHOPKIT

MADE IN THE UK